



PRS.0139

## BENTONET

Preshaped trapezoidal steel mesh cage for CLAYSEAL 25.20

### Customs Code

7326 9098

### Packaging

- Bulk material 1 m
- Box: 30 x (Bulk material 1 m)

### Application

- Apply by hand

Family  
**Proseal**

Type  
**Steel-mesh sealing bar holders**

Product Lines

- Aqua
- Building
- Infratech
- Sanageb

Functional Categories

- **Waterproofing underground structures with hydro-expansive products**
- **Waterproofing control joints or construction joints**
- **Construction of underground works in high performance waterproof concrete**

Components  
**Single-component**

Appearance  
**Steel mesh**

## General description

Trapezoid preshaped steel square mesh cage open only on one side, to be used to encourage correct positioning of the CLAYSEAL 25.20 sodium bentonite waterstops, and to prevent the displacement from the seat provided, especially in complex situations or on surfaces which are not perfectly prepared. Once the joint is inserted, BENTONET will have to be fixed to the concrete support using steel nails and washers every 20-25 cm.

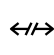
## Dosage

1 m/m : product to buy as needed.

## Fields of application

Rigid construction joints (non-expanding) and connections with safe and permanent hydraulic seal.


## Basic features


 Length:  
1 m

 Nonflammable

 Unlimited shelf-life

 Use wearing protective gloves

 Width:  
2.8 cm

 Available colours  
Steel

## Technical specifications

Mesh size: 13x13 mm

## Substrate preparation

Prepare the smoothest and most planar laying surface, using REPAR TIX to compensate for any inhomogeneity, and accurately remove crumbling, non-adhering, powdery parts.

## Instructions for use

Spread the sodium bentonite waterstop CLAYSEAL 25.20 in the designated position. Install the BENTONET joint locking cage above the CLAYSEAL 25.20 hydro-expansive kerb. Fix it to the support by nailing: a steel nail every 20-25 cm approximately. The joints between the waterstop kerbs are sealed by simply flanking them by at least 10 cm and not by overlapping the ends.

The positioning of the CLAYSEAL 25.20 hydro-expansive kerb must ensure a concrete covering of 10-12 cm in order to contain the expansive action caused by hydration.

## Storage and preservation

Store the product in its original packing, in a fresh and dry environment, avoiding frost and direct sunlight. Protect from humidity.

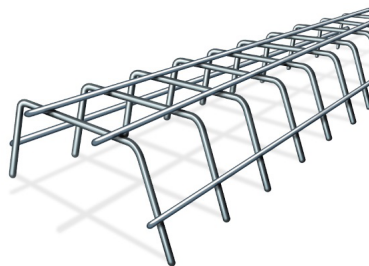


[www.azichem.com](http://www.azichem.com)

Updated: **24/08/2020**

General sales conditions and legal notices on

[www.azichem.com/disclaimer](http://www.azichem.com/disclaimer)



## Warnings, Precautions and Ecology

The general information, along with any instructions and recommendations for use of this product, including in this data sheet and eventually provided verbally or in writing, correspond to the present state of our scientific and practical knowledge.

Any technical and performance data reported is the result of laboratory tests conducted in a controlled environment and thus may be subject to modification in relation to the actual conditions of implementation.

Azichem Srl does not assume any liability arising from inadequate characteristics related to improper use of the product or connected to defects arising from factors or elements unrelated to the quality of the product, including improper storage.

Those wishing to utilise the product are required to determine prior to use whether or not the same is suitable for the intended use, assuming all consequent responsibility.

The technical and characteristic details contained in this data sheet shall be updated periodically. For consultation in real time, please visit the website: [www.azichem.com](http://www.azichem.com). The date of revision is indicated in the space to the side. The current edition cancels out and replaces any previous version.

Please note that the user is required to read the latest Safety Data Sheet for this product, containing chemical-physical and toxicological data, risk phrases and other information regarding the safe transport, use and disposal of the product and its packaging. For consultation, please visit: [www.azichem.com](http://www.azichem.com).

It is forbidden to dispose of the product and/or packaging in the environment.

*BENTONET is produced/distributed by*



Via Giovanni Gentile, 16/A - 46044 Goito (MN), Italy  
info@azichem.com Tel. +39 0376.604185 /604365 Fax +39 0376 604398



[www.azichem.com](http://www.azichem.com)

Updated: **24/08/2020**  
General sales conditions and legal  
notices on  
[www.azichem.com/disclaimer](http://www.azichem.com/disclaimer)